

PUBLISHED FOR ODM MEMBERS BY:

The National Elections Board, Orange Democratic Movement
Chungwa House, No. 12, Loiyangalani Drive
P.O. Box 42242-00100 NAIROBI
Email: NEB@odm.co.ke
Website: www.odm.co.ke



**HANDBOOK FOR PARTY
GRASSROOTS ELECTIONS
2021**



HANDBOOK FOR PARTY GRASSROOTS ELECTIONS

©2021

PUBLISHED FOR PUBLIC USE BY:

The National Elections Board
Orange Democratic Movement Chungwa House
No. 12, Loiyangalani Drive Off Convent Drive
P.O. Box 42242-00100 NAIROBI
Email: NEB@odm.co.ke
Website: www.odm.co.ke

CONTENTS

1. ACKNOWLEDGEMENT	4
2. FOREWORD	6
3. BACKGROUND	9
4. PARTY GRASSROOTS ELECTIONS	9
5. APPLICABLE PRINCIPLES	10
6. DISPUTE RESOLUTION	12
7. METHODS OF CONDUCTING ELECTIONS	12
8. ELIGIBILITY CRITERIA	15
9. FEES PAYABLE BY ASPIRANTS	17
10. POLLING UNIT ELECTIONS	19
11. SUB-BRANCH ELECTIONS	20
12. BRANCH ELECTIONS	22
13. COUNTY ELECTIONS	24
14. THE NATIONAL DELEGATES CONVENTION	26
15. ODM WOMEN'S LEAGUE NATIONAL ELECTIONS	28
16. ODM YOUTH LEAGUE NATIONAL ELECTIONS	29
17. ODM DISABILITY LEAGUE NATIONAL ELECTIONS	30
18. ODM ELECTIONS STRUCTURE	31

1. ACKNOWLEDGEMENT

The process of developing this training handbook was highly participatory, and has drawn input from several partners and teams, right up to its completion. The NEB is sincerely grateful to all those without whom this work may not have been inclusive and rich in content.

The NEB wishes to acknowledge the support of the members of the Legal Committee for the time and effort they put into this process. For their insights and legal expertise on the applicable legal instruments, rules and regulations governing the party election process, we are truly grateful.

The NEB also acknowledges the ODM Secretariat for being instrumental in providing logistical support and facilitating the Board's meetings in preparation of this handbook. The collaborative and flexible nature of the Secretariat to readily second their staff to the NEB when required facilitated a smooth process and we look forward to a fruitful working partnership.

Special acknowledgement to the Oslo Centre for their immeasurable support in the production of this manual by facilitating consultancy services to the Board. In you we have partners and friends. To all the members of the Board for their dedication and resilience. Each one of you plays a unique and critical role in fulfilling the mandate of the NEB.

Lastly, the NEB would like to appreciate the ODM members for their feedback during the public participation stage of the manual. The views show political awareness and their readiness when called upon for any party activities.

The Board is greatly indebted to each one of you for making this process a success. Thank you and God bless you abundantly!

2. FOREWORD

The Constitution of Kenya, 2010, provides that Kenya shall be a multi-party democratic State founded on the national values and principles of governance in Article 10. Article 91 provides for the establishment and governance of political parties.

It requires political parties to be national in character, have democratically elected governing bodies, abide by the democratic principles of good governance, and promote and practice democracy through regular, fair, and free elections within the Party respecting the rights of all persons, including minorities and marginalised groups, to participate in the Party's political processes. These principles are amplified in the Political Parties Act, 2011.

The Orange Democratic Movement (ODM) is a national political party where its leadership has always been at the forefront to expand the political space in Kenya. ODM advocates and recognizes the need for internal democracy in all its processes. To this end, ODM has been a consistent runner in implementing the laws and principles of democratic political parties, including the requirement to hold elections every five years to reinvigorate its leadership at different levels.

The ODM structures begin from the grassroots - with the polling unit as its lowest level and end with the national Delegates Convention at the apex. In line with its all-inclusive governance principles, the Party ensures that all its office formations respect the constitutional principles of equality, equity, and inclusion.

The constitution has provided for the inclusion in party structures of the male and female genders, youths, persons with disabilities, and other special interest and marginalised groups.

The ODM Constitution and Elections and Nominations Rules provide a people-centred process to allow members of the Party to meaningfully carry out their obligation to determine their leadership at all levels.

The Party National Elections Board (NEB), being the organ constitutionally mandated to oversee party elections and nominations, is at the forefront of strengthening the electoral systems to ensure that the ODM elections at all levels are free, fair, credible, simple, and verifiable.

In response to this aspiration, NEB has developed this Handbook to serve as a quick guide and reference material on critical information for members who participate in the party grassroots electoral processes as voters, delegates, or aspirants to the various offices. This Handbook outlines the fundamental aspects that members will find helpful, including - without limitation - who is eligible to vote, who is eligible to run for office, which offices are open for election, and the mode of elections.

The handbook encourages members to engage in consensus building for the delivery of party structures that are inclusive of the diversities of the people that make the party membership and processes that are free of violence and malpractices.

The NEB wishes to point out that this Handbook is no substitute for the Party Constitution and Election and Nomination Rules. We urge members to read the two documents available at www.odm.co.ke/constitution; www.odm.co.ke/elections and nominations rules or at any of our offices countrywide.

The NEB gives a solemn promise to our members that we shall deliver free, fair, and competitive elections in the true democratic nature of our Party. In the spirit of our time-honored slogan, we say **"Tuko Tayari."**



Catherine Muyeka Mumma,

Chairperson,

National Elections Board

National Elections Board (NEB) Nairobi, 12th March 2021

3. BACKGROUND

The Constitution of Kenya 2010 establishes political parties in Articles 4(2) and 91. These Articles outline the broad principles for the management of political parties, which are expounded by the Political Parties Act, 2011, the Elections Act, 2011, and the Regulations and Rules made thereunder. Thus, the law requires political parties to meet specific minimum requirements, including the regular conduct of elections for its offices under their respective Party constitutions.

This booklet contains a summary of the guidelines for the conduct of the party grassroots elections. The Party grassroots elections include the election for ODM office bearers from the polling units (polling centre) to the national office. It is intended to guide members at all levels to ensure that the elections are conducted in a free, fair, democratic manner and in compliance with the applicable laws, rules and regulations.

4. PARTY GRASSROOTS ELECTIONS

The Orange Democratic Movement Party Constitution and the Party Election and Nomination Rules obligate the Party to undertake elections for its offices every five years. Part 3 of the rules requires the Party to elect officials at polling unit (polling centre), Sub-Branch (ward), Branch (constituency), County, and National levels. All registered Party members shall be allowed to participate directly in the election of the officials at the polling unit. A total of (eighty) 80 delegates shall be elected, twenty (20) each for the ODM Mainstream Office, the ODM Women League Office (OWL), the ODM Youth League Office (OYL), and the ODM Disability League Office (ODL); which comprise the four party structures.

The National Elections Board (NEB) shall issue a notice to guide members on such elections as may become necessary. After the polling unit elections, the polling unit office bearers shall become the delegates for electing the sub-branch office bearers, who shall become the delegates for electing the branch officials, who shall then be the delegates to elect the county office bearers. The national office bearers shall be elected at the national delegates convention by delegates who shall be appointed in accordance with Article 7(2) of the Party Constitution.

5. APPLICABLE PRINCIPLES

5.1 Operating on the following values and principles, the election shall:

- a. be democratic, free, and fair;
- b. be transparent and accountable;
- c. be inclusive, by ensuring equitable representation of the people from: different geographical locations (villages, sub-locations, locations, etc.); different interest groups (clans, ethnic minorities, etc.); in every electoral jurisdiction [polling unit, sub-branch (ward), branch (constituency), county, and national levels];
- d. ensure that not more than one member from any geographical location within the area is a holder of an executive office of all of the four party structures (namely: the Chairperson, Deputy-Chairperson, Secretary, Deputy Secretary, Treasurer, Deputy Treasurer, Organising Secretary, Deputy Organising Secretary);
- e. ensure that not more than two-thirds of each of the offices, save for the OWL structure, are of the same gender.

- f. For the avoidance of doubt, that the *executive offices*, namely Chairperson, Deputy Chairperson, Secretary, Deputy Secretary, Treasurer, Deputy Treasurer, Organising Secretary, and Deputy Organising Secretary, shall also not comprise more than Two-thirds of either gender;
 - g. ensure equitable representation of youth;
 - h. ensure the fair representation of persons with disabilities;
 - i. ensure the inclusion of special interest / marginalised groups;
 - j. be free from violence, intimidation, improper influence (bribery), or corruption.
 - k. ensure only participation by registered ODM Party members
 - l. ensure, while conducting the party grassroots elections, that any prevailing public health protocols, directives or other measures as may from time to time be issued by the relevant authorities are respected and factored in the logistical arrangements and implemented.
- 5.2. The NEB may suspend or discontinue the party grass roots elections exercise in any electoral jurisdiction if it determines that there is a threat of violence and the breach of some of the values and principles in this clause and the lives of individuals are likely to be put in danger.
- 5.3. Where party grassroots elections are suspended or discontinued in accordance with 4.2, the NEB shall make a recommendation to the NEC to appoint interim officials for the concerned electoral jurisdiction pending the conduct of the repeat elections. The NEC shall make such appointment in a manner that takes in consideration the need for representation of the different interest groups including any differing factions.
- 5.4. The Interim office holders shall not be in office for more than two years.

6. DISPUTE RESOLUTION

- 6.1. The Party encourages members who are aggrieved in any way with the elections at the polling unit, sub-branch, Branch, or county levels to resolve their disputes amicably.
- 6.2. Where an amicable settlement is not reached, the disputes shall be referred to the NEB to determine the best way to resolve the dispute.
- 6.3. The NEB may appoint a panel of three (3) persons to assist in the resolution of any dispute.

7. METHODS OF CONDUCTING ELECTIONS

The following methods shall apply to the conduct of the Party grassroots elections:

- 7.1. **Election through consensus building:** Consensus Building shall be the first option applied in the party elections. Consensus building is an agreement by the members or delegates on who shall hold which office. The Party encourages Party members to use this method in all elections in the first instance, provided that the consensus reached does not violate the values and principles in Guideline (3) above.
 - a) Consensus shall include harmonisation of current offices, through the filling of vacant positions; provided that this shall be the electoral method that members of the Party in the applicable county will have agreed upon; and provided that persons being retained in office meet the eligibility criteria in Guideline (7) below



- b) **Voting by members or delegates:** If members or delegates of any electoral jurisdiction fail to reach a consensus in the election of their officials; voting by eligible members and delegates shall be conducted through any method, including: the counting of raised hands; through queuing behind candidates ('Mlolongo'); and by secret ballot.





- c) **The members/delegates shall** - with the NEB's approval - agree on a neutral person to act as the presiding officer. The NEB shall also provide the list of eligible members and delegates to eligible to participate in this election.

Whether the elections are conducted through consensus or voting, the results of the polls shall ensure strict compliance with the values and principles provided in Guideline (3) above. All party members are encouraged to self-organise and conduct elections of their officials - in consultation with the NEB - according to this Guideline.

Where the members or delegates are not able to elect their officials - in line with both this Guideline and Guideline (3) above - the election shall be suspended. The NEB will then preside over the election of the officials for that entity.

8. ELIGIBILITY CRITERIA

- 8.1. Only Party members registered as Life, and Ordinary members shall participate in the ODM Party grassroots elections as either voters or aspirants.
- 8.2. Members shall be identified using their national identity cards and the party membership register.
- 8.3. A Party member is an individual who is registered under the Party membership registration rules. His/her name appears in the ODM Party Register.
- 8.4. A member can only participate in the elections for the polling unit where s/he is registered as a voter. A member is not eligible to vote at any other polling unit where they are not registered.
- 8.5. Members may verify their membership status and applicable polling unit with the Party before the grassroots elections exercise.
- 8.6. NEB shall publish a list of all polling units for every County and provide the list of Party membership before any election.

All members are urged to verify their membership status and polling units at least seven days before the date of the elections.

- 8.7. A person qualifies to run for office at the polling unit if s/he is registered and has been a Party member for at least six (6) months before the date of the elections, or in accordance with any resolutions as may be made by NEC, from time-to-time.
- 8.8. Any persons wishing to run for any of the executive offices at the national, County and branch levels shall be life members, in good standing.
- 8.9. Any persons wishing to run for the position of the chairperson of any sub-branch office shall be life members, in good standing.
- 8.10. The provisions in (viii) & (ix) above, apply to all the four Party structures
- 8.11. Youth - means a person who has attained the age of 18 and is under 35 years.
- 8.12. Women - are persons of the female gender and include young women and women with disabilities.
- 8.13. A person with a disability - includes men, women, and youth with disabilities.
- 8.14. Special interest / marginalised groups refer to persons representing a minority interest group of persons who live within the electoral jurisdiction's geographical location.
- 8.15. Any official is eligible for re-election into the same office, provided that one shall not have served for more than two, five-year terms or ten years (cumulatively) as an official in the OWL and the OYL.
- 8.16. Where a vacancy has arisen in any of the Party structures, the members or delegates may elect someone to fill the vacancy, provided that:
 - a) They notify the NEB of such a vacancy, in accordance with the applicable rule, and the NEB shall accordingly initiate the process of filling that vacancy;

- b) Before the commencement of the exercise of the Party grassroots elections in a County, the Chairperson or acting Chairperson (where the vacancy is that of the Chairperson) of the affected office or Party structure shall notify the NEB of such vacancy, in writing, through the Chairperson of the County, in accordance with the applicable rules;
- c) The NEB may authorise the relevant Party structure/s to fill in the vacancies; provide that:
 - 8.17. Persons seeking election to fill any vacancy shall meet of the requirements of eligibility in accordance with this Guideline.
 - 8.18. No official who resigned or left the Party and has rejoined the Party may be considered for re-election in the vacant position.
 - 8.19. Notwithstanding (ii) above, any person who has returned and wishes to serve as a Party official - after resigning from an elective Party office or having left the Party, may seek a fresh mandate. S/He would have to be elected as a polling unit official and then proceed through the Party hierarchy to seek election to the other levels of the Party structures - if there are any vacancies.
 - 8.20. No Party officials shall not hold more than one office at a time.
 - 8.21. Where a Party official is elected into another Party office/structure, s/he will relinquish the office that s/he held; and the vacancy that arises shall be filled in accordance with the applicable rules.

9. FEES PAYABLE BY ASPIRANTS

- 9.1. Any member or delegate aspiring for any of the party offices shall be charged a fee, as provided below:
 - a) All aspirants for Polling unit Offices: **Ksh 100**
 - b) All aspirants for any position in the Sub-branch (ward) offices, (other than that of Chairpersons): **Ksh 200**

- d) All aspirants for Chairpersons to Sub-branch (ward) offices: **Ksh 500**
 - e) All aspirants for any of the non-executive positions, as well as for the positions of the women, youth, disability and special interest/marginalised group representative in the Branch (constituency) offices: **Ksh 500**
 - f) All aspirants for any of the executive positions at Branch (constituency) offices, (other than that of Chairpersons): **Ksh 1,000**
 - g) All aspirants for Chairpersons to Branch (constituency) offices: **Ksh 5,000**
 - h) All aspirants for any of the non-executive positions in the County Offices: **Ksh 1,000**
 - i) All aspirants for the women, youth, disability and special interest representative positions in the County offices: **Ksh 2,500.**
 - j) All aspirants for any of the executive positions at County offices, (other than that of Chairpersons): **Ksh 5,000.**
 - k) All aspirants for Chairpersons to County offices: **Ksh 10,000**
 - l) All aspirants for any position in the National Offices: **Ksh 20,000**
- 9.2. All aspirants, including current office holders who are seeking to be re-elected or to be re-appointed through consensus, shall pay the applicable fees
- 9.3. Aspirants for party office shall submit their applications to NEB at the address provided below; and make their payments by MPESA to the Pay Bill number as provided below:
- a) **NEB email address:** neb@odm.co.ke
 - b) **MPESA Pay Bill number:** 985900;
Account: your ID No./PGE (e.g. 12345678/PGE)

10. POLLING UNIT ELECTIONS

- 10.1. There will be elections of twenty (20) officials each to the four (4) Polling Unit Offices, namely the ODM Mainstream Office; the ODM Women League; the ODM Youth League, and the ODM Disability League, as follows:
- a) The Polling Unit ODM Women's League constitutes Chairperson, Deputy Chairperson, Secretary, Deputy Secretary, Organising Secretary, Deputy Organising Secretary, Treasurer, Deputy Treasurer, Youth representative, a person with a disability, Special Interest/or Marginalised representative; and nine (9) Committee Members.
 - b) The Polling Unit ODM Youth League constitutes Chairperson, Deputy Chairperson, Secretary, Deputy Secretary, Organising Secretary, Deputy Organising Secretary, Treasurer, Deputy Treasurer, Women's Affairs representative, Person with Disability, Special Interest/or Marginalised representative; and nine (9) Committee Members.
 - c) The Polling Unit ODM Disability League constitutes Chairperson, Deputy Chairperson, Secretary, Deputy Secretary, Organising Secretary, Deputy Organising Secretary, Treasurer, Deputy Treasurer, Women's Affairs representative, Youth representative, Special Interest/or Marginalised representative; and nine (9) Committee Members.
 - d) The ODM Polling Unit Steering Committee constitutes Chairperson, Deputy Chairperson, Secretary, Deputy Secretary, Organising Secretary, Deputy Organising Secretary, Treasurer, Deputy Treasurer, Secretary for Women Affairs (ODM Women League Chairperson, Secretary for Youth Affairs (ODM Youth League Chairperson), Secretary for Disability League (ODM Disability League Chairperson), Special Interest/or Marginalised representative; and eight (8) Committee Members.

- 10.2.** Every Party member shall be allowed to participate in the elections of their polling unit office bearers. Members shall be invited through a notice by NEB that shall be posted on the Party Website and any other suitable forum. NEB shall provide the Party members register for every polling unit, for purposes of the grassroots elections.
- 10.3.** Declaration of elected office bearers and transmission of their details to NEB: The person presiding over elections at a polling unit shall openly declare the persons elected into office, or the persons agreed upon by consensus, to be office bearers, and record their details in the NEB prescribed forms, which shall be signed by all the officials, each against their name and transmitted to the NEB.

11. SUB-BRANCH ELECTIONS

- 11.1.** There shall be elections of twenty (20) officials for each of the Sub-branch (Ward) offices, namely the ODM Mainstream Office: the ODM Women League; the ODM Youth League, and the ODM Disability League as follows:
- a)** The Sub-Branch (Ward) ODM Women's League constituted of Chairperson, Deputy Chairperson, Secretary, Deputy Secretary, Organising Secretary, Deputy Organising Secretary, Treasurer, Deputy Treasurer, Youth representative, a person with a disability, Special interest/or marginalised representative; and nine (9) Committee Members.
- b)** The Sub-Branch (Ward) ODM Youth League constituted of Chairperson, Deputy Chairperson, Secretary, Deputy Secretary, Organising Secretary, Deputy Organising Secretary, Treasurer, Deputy Treasurer, Women's Affairs representative, Person with Disability, Special interest/or marginalised representative; and nine (9) Committee Members.

- c)** The Sub-Branch (Ward) ODM Disability League constituted of Chairperson, Deputy Chairperson, Secretary, Deputy Secretary, Organising Secretary, Deputy Organising Secretary, Treasurer, Deputy Treasurer, Women's Affairs representative, Youth representative, Special interest/or marginalised representative; and nine (9) Committee Members.
- d)** The Sub-Branch (Ward) Steering Committee constituted of a Chairperson, Deputy Chairperson, Secretary, Deputy Secretary, Organising Secretary, Deputy Organising Secretary, Treasurer, Deputy Treasurer, Secretary for Women Affairs (ODM Women League Chairperson, Secretary for Youth Affairs (ODM Youth League Chairperson), Secretary for Disability League (ODM Disability League Chairperson), Special interest/or marginalised representative; and 8 Committee Members.

The Sub-branch elections shall be conducted through the delegates system, where the officials elected at each polling unit shall be the only delegates eligible to vote in sub-branch elections. The sub-branch elections shall be organised to take place on a date agreed upon in consultation with NEB. The delegates shall follow the methods provided in Guideline (6) above.

The election process shall ensure that the elected sub-branch office is compliant with the values and principles provided in Guideline (4) above.

The person presiding over elections at a sub-branch/ward level shall openly declare the persons elected into office, or the persons agreed upon by consensus, to be office bearers, and record their details in the NEB prescribed forms, which shall be signed by all the officials, each against their name and transmitted to the NEB.

12. BRANCH ELECTIONS

12.1. There will be elections of twenty (20) officials for Branch (Constituency) offices, namely the ODM Mainstream Office; the ODM Women League; the ODM Youth League, and the ODM Disability League as follows:

- a) The Branch (Constituency) ODM Women's League constituted of Chairperson, Deputy Chairperson, Secretary, Deputy Secretary, Organising Secretary, Deputy Organising Secretary, Treasurer, Deputy Treasurer, Youth representative, a person with a disability, Special interest/or marginalised representative; and nine (9) Committee Members.
- b) The Branch (Constituency) ODM Youth League constituted of Chairperson, Deputy Chairperson, Secretary, Deputy Secretary, Organising Secretary, Deputy Organising Secretary, Treasurer, Deputy Treasurer, Women's Affairs representative, Person with Disability, Special interest/or marginalised representative; and nine (9) Committee Members.

- c) The Branch (Constituency) ODM Disability League constituted of Chairperson, Deputy Chairperson, Secretary, Deputy Secretary, Organising Secretary, Deputy Organising Secretary, Treasurer, Deputy Treasurer, Women's Affairs representative, Youth representative, Special interest/or marginalised representative; and nine (9) Committee Members.
- d) The Branch (Constituency) Steering Committee constituted of a Chairperson, Deputy Chairperson, Secretary, Deputy Secretary, Organising Secretary, Deputy Organising Secretary, Treasurer, Deputy Treasurer, Secretary for Women Affairs (ODM Women League Chairperson, Secretary for Youth Affairs (ODM Youth League Chairperson), Secretary for Disability League (ODM Disability League Chairperson), Special interest/or marginalised representative; and 8 Committee Members.

The Branch elections shall be conducted through the delegates system, where the officials elected at each sub-branch shall be the only delegates eligible to vote in Branch elections. The Branch elections shall be organised to take place on a date agreed upon in consultation with NEB. The delegates shall follow the methods provided in Guideline (6) above.

The election process shall ensure that the elected Branch (Constituency) office is compliant with the principles provided in Guideline (4) above.

The person presiding over elections at a Branch level shall openly declare the persons elected into office, or the persons agreed upon by consensus, to be office bearers, and record their details in the NEB prescribed forms, which shall be signed by all the officials, each against their name and transmitted to the NEB.

13. COUNTY ELECTIONS

- a) There will be elections of twenty (20) officials for each County office, constituted of: County Coordinating Chairperson, County Deputy Coordinating Chairperson, County Coordinating Secretary, County Coordinating Organising Secretary, County Coordinating Treasurer, County ODM Women's League Representative, County ODM Youth League Representative, County ODM Disability League Representative, County Special Interest or Marginalised Group Representative; and eleven (11) Committee Members.
- b) The County elections shall be conducted through the delegates system. The officials elected at each Branch shall be the only delegates eligible to participate in electing County office holders.
- c) Members of the ODM Women's League Branch office shall be the delegates for the purpose of electing the ODM Women's Leagues representative to the County office.

- d) Members of the ODM Youth League Branch office shall be the delegates for the purpose of electing the ODM Youth Leagues representative to the County office.
- e) Members of the ODM Disability League Branch office shall be the delegates for the purpose of electing the ODM Disability Leagues representative to the County office.
- f) Members of the County ODM office, including - County Coordinating Chairperson, County Deputy Coordinating Chairperson, County Coordinating Secretary, County Coordinating Organising Secretary, County Coordinating Treasurer, County Special Interest or Marginalised Group Representative; and the eleven (11) Committee Members shall be elected by all the Branch Executive Committees, who shall be the only delegates, to participate in the election of ODM County office holders.
- g) The County elections shall be organised to take place on a date agreed upon in consultation with NEB. The delegates shall follow the methods provided in Guideline (6) above.
- h) The election process shall ensure that the elected County office is compliant with the values and principles provided in Guideline (4) above.

14. THE NATIONAL DELEGATES CONVENTION

- 14.1.** Following the finalisation of the elections at the polling units, sub-branches, Branches, and County levels, the Party shall convene the National Delegates Convention (NDC), in accordance with the Party Constitution.
- 14.2.** The NDC shall be convened to elect members of the national offices as set out in the Party Constitution. These include the National Executive Committee, the National ODM Women's League office bearers, the National ODM Youth League office bearers, and the National ODM Disability League office bearers.
- 14.3.** The notice convening the NDC shall set out the agenda and the venue for the Convention.
- 14.4.** The persons eligible to participate as delegates, and to vote in the NDC for the election of the national office bearers, shall be selected in accordance with Article 7.2 of the Party Constitution. The offices to be contested at the National Delegates Convention are as follows:
- 1) Party Leader.
 - 2) Deputy Party leader (Policy).
 - 3) Deputy Party Leader (Strategy).
 - 4) National Chairperson.
 - 5) Deputy Chairperson (Operations).
 - 6) Deputy Chairperson (Programmes).
 - 7) Deputy Chairperson (Strategy & Political Affairs).
 - 8) Deputy Chairperson (Internal Affairs).
 - 9) Secretary-General.
 - 10) Deputy Secretary-General (Political Affairs).
 - 11) Deputy Secretary-General (Strategy).
 - 12) National Treasurer.
 - 13) Deputy Treasurer (Finance & Audit).
 - 14) Deputy Treasurer (Planning & Resource Mobilisation).

- 15) National Organising Secretary.
- 16) Deputy Organising Secretary (Programmes).
- 17) Deputy Organising Secretary (Recruitment).
- 18) Deputy Organising Secretary (Internal Affairs).
- 19) Deputy Organising Secretary (External Affairs).
- 20) Secretary for Public Policy and Economic Affairs.
- 21) Secretary for Legal and Constitutional Affairs.
- 22) Secretary for Publicity and Information.
- 23) Secretary for International Affairs.
- 24) Secretary for Women Affairs.
- 25) Secretary for Youth Affairs.
- 26) Secretary for Special Interests Groups.
- 27) Secretary for Environment.
- 28) Secretary for Parliamentary Affairs- (National Assembly and Senate).
- 29) Secretary for Devolution.
- 30) Secretary for Science and Technology.
- 31) Secretary for Special Programmes and Social Welfare.
- 32) Secretary for Labour and Human Resource Development.
- 33) Secretary for National Security.
- 34) Secretary for Humanitarian and Disaster Management Affairs.
- 35) Secretary for Disability Affairs.
- 36) Secretary for Political Affairs.
- 37) Director of Campaigns.
- 38) Deputy Director of Campaigns.

15. ODM WOMEN'S LEAGUE NATIONAL ELECTIONS

- a) There will be elections of twenty (20) officials for ODM Women's League National Executive Committee, constituted of: the Chairperson of the ODM Women's League, Deputy Chairperson, Secretary, Deputy Secretary, Organising Secretary, Deputy Organising Secretary, Treasurer, Deputy Treasurer and twelve (12) Committee Members.
- b) The election to the ODM Women's League National Executive Committee shall be carried out at the ODM OWL National Delegates Convention (NDC).
- c) The persons eligible to participate as voting delegates at the OWL NDC shall be: (i) the twenty (20) members of the national OWL executive committee; (ii) the forty seven (47) OWL representatives to the County Coordinating Committee; (iii) the Chairpersons and Secretary for the 290 OWL Branches Executive Committees; and (iv) top up Delegates from the different electoral jurisdictions (Branch/Constituency and Sub-Branch/Ward) as may be determined from time to time, taking into account the number of Party registered women members and elected ODM women members in these respective jurisdictions.
- d) The persons eligible to vie for a national office at the OWL NDC shall comply with Guideline (7) & (8).

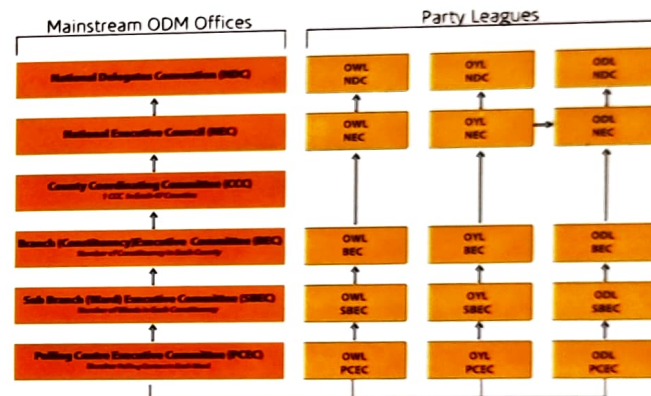
16. ODM YOUTH LEAGUE NATIONAL ELECTIONS

- a) There will be elections of 20 officials for ODM Youth League National Executive Committee, constituted of: the Chairperson of the Chairperson ODM youth league, Deputy Chairperson, Secretary, Deputy Secretary, Organising Secretary, Deputy Organising Secretary, Treasurer, Deputy Treasurer and 12 Committee Members.
- b) The election to the ODM Youth League National Executive Committee shall be carried out at the ODM OYL National Delegates Convention (NDC).
- c) The persons eligible to participate as voting delegates at the OYL NDC shall be: (i) the 20 members of the national OYL executive committee; (ii) the forty seven (47) OYL representatives to the County Coordinating Committee; (iii) the Chairpersons and Deputy Chairpersons for the two hundred and ninety (290) OYL branches executive committees; and (iv) top up Delegates from the different electoral jurisdictions (Branch/Constituency and Sub-Branch/Ward) as may be determined from time to time, taking into account the number of Party registered Youth members and elected ODM Youth members in these respective jurisdictions.
- d) The persons eligible to vie for a national office at the OYL NDC shall comply with Guideline (7) & (8).

17. ODM DISABILITY LEAGUE NATIONAL ELECTIONS

- a) There will be elections of twenty (20) officials for ODM Disability League National Executive Committee, constituted of: the Chairperson of the Chairperson Disability League, Deputy Chairperson, Secretary, Deputy Secretary, Organising Secretary, Deputy Organising Secretary, Treasurer, Deputy Treasurer and twelve (12) Committee Members.
- b) The election to the ODM Disability League National Executive Committee shall be carried out at the ODM ODL National Delegates Convention (NDC).
- c) The persons eligible to participate as voting delegates at the ODL NDC shall be: (i) the (twenty)20 members of the national ODL executive committee; (ii) the Forty seven (47) ODL representatives to the County Coordinating Committee; (iii) the Chairpersons and Deputy Chairpersons for the two hundred and ninety (290) ODL branches executive committees; and (iv) top up Delegates from the different electoral jurisdictions (Branch/Constituency and Sub-Branch/ Ward) as may be determined from time to time, taking into account the number of Party registered Disability members and elected ODM Disability members in these respective jurisdictions. The persons eligible to vie for a national office at the ODL NDC shall compile with Guideline (7) & (8).

18. ODM ELECTIONS STRUCTURE



Key

OWL- ODM Women League

OYL - ODM Youth League

ODL - ODM Disability League